

TREVECCA-UNPLUGGED-SECURE

MAC OS X - Secure WIRELESS INSTRUCTIONS for Students & Employees

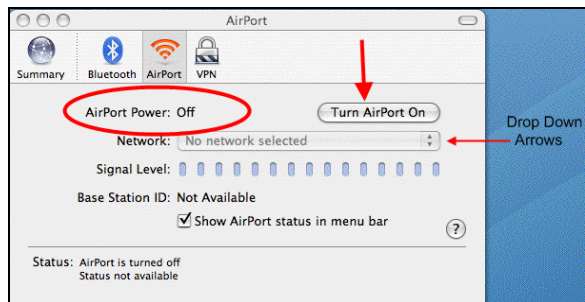
Instructions for Trevecca Students or Employees

1. At start screen, locate the **Internet Connect Icon**, which is located at bottom of screen in task bar.



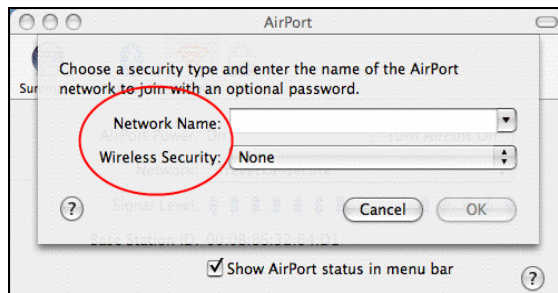
2. *Click* on **Internet Connect Icon**. This opens the Airport pop-up box.

3. Verify that **Airport Power** is “ON”. If not, *Click* on button to **Turn Airport On**.



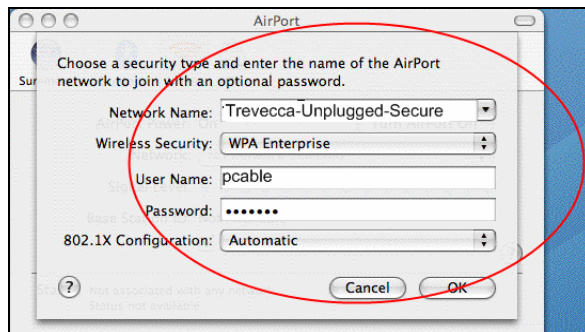
4. At **Network box**, *Click* on the arrow keys to show drop down list.

5. Select “Other” from the options listed. When prompted for **Network Name** and **Wireless Security**:



- a. Type in *Trevecca-Unplugged-Secure* for **Network Name**
- b. Select *WPA Enterprise* in **Wireless Security** drop-down list

6. Once you select WPA Enterprise for Wireless Security it will show **User Name**, **Password**, and **802.1X Configuration options**.



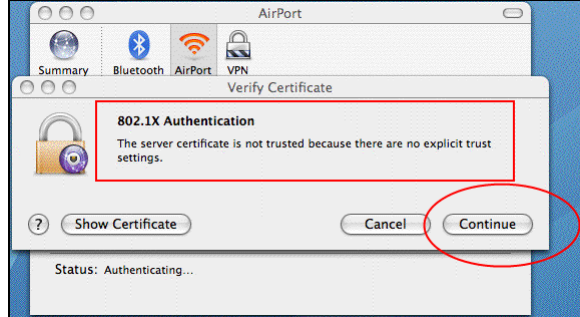
7. Type in your **Trevecca Logon Name** and **Password**.
8. Select **Automatic** under 802.1X Configuration drop down list and click **OK**.

TREVECCA-UNPLUGGED-SECURE

MAC OS X - Secure WIRELESS INSTRUCTIONS for Students & Employees

9. You will then see a pop-up box to Verify Certificate and it will state:

(The server certificate is not trusted because there are no explicit trust settings.)



10. Select **Continue** button at bottom of box.

11. You will then be placed back at the AirPort box again.

12. Verify that the **Status** (at bottom of box) shows "Connected to Trevecca-Unplugged-Secure."

